

# Office/Warehouse for Lease

207 Beaufort St., Chapin, SC



LEASE RATE:

**\$7.75 NNN (\$6,975/MO)**

## EXCLUSIVE BROKERS:

James C. Harrison III, CCIM  
Partner/Senior Brokerage Associate  
803 834.7014 Ext. 101 (o)  
803 331.8088 (c)  
jharrison@cypresscommercial.com

R. Coleman Davis  
Senior Brokerage Associate  
803 834.7014 Ext. 105 (o)  
803 807.6809 (c)  
cdavis@cypresscommercial.com

## Property Highlights

- Excellent Office/Warehouse Space in the heart of Chapin
- 10,860+/- SF TOTAL- 3,366+/- Office Space; 7,494+/- Warehouse Space
- Class A Office Space (2-Story)
- 7 Offices/2 Break Rooms/3 Restrooms/Conference Room
- Renovated 2018; 13 Parking Spaces
- 1 Dock Door; 1 Drive-In Door
- Easy access to Interstate 26



## Location Overview



14,000 VPD on  
Chapin Road



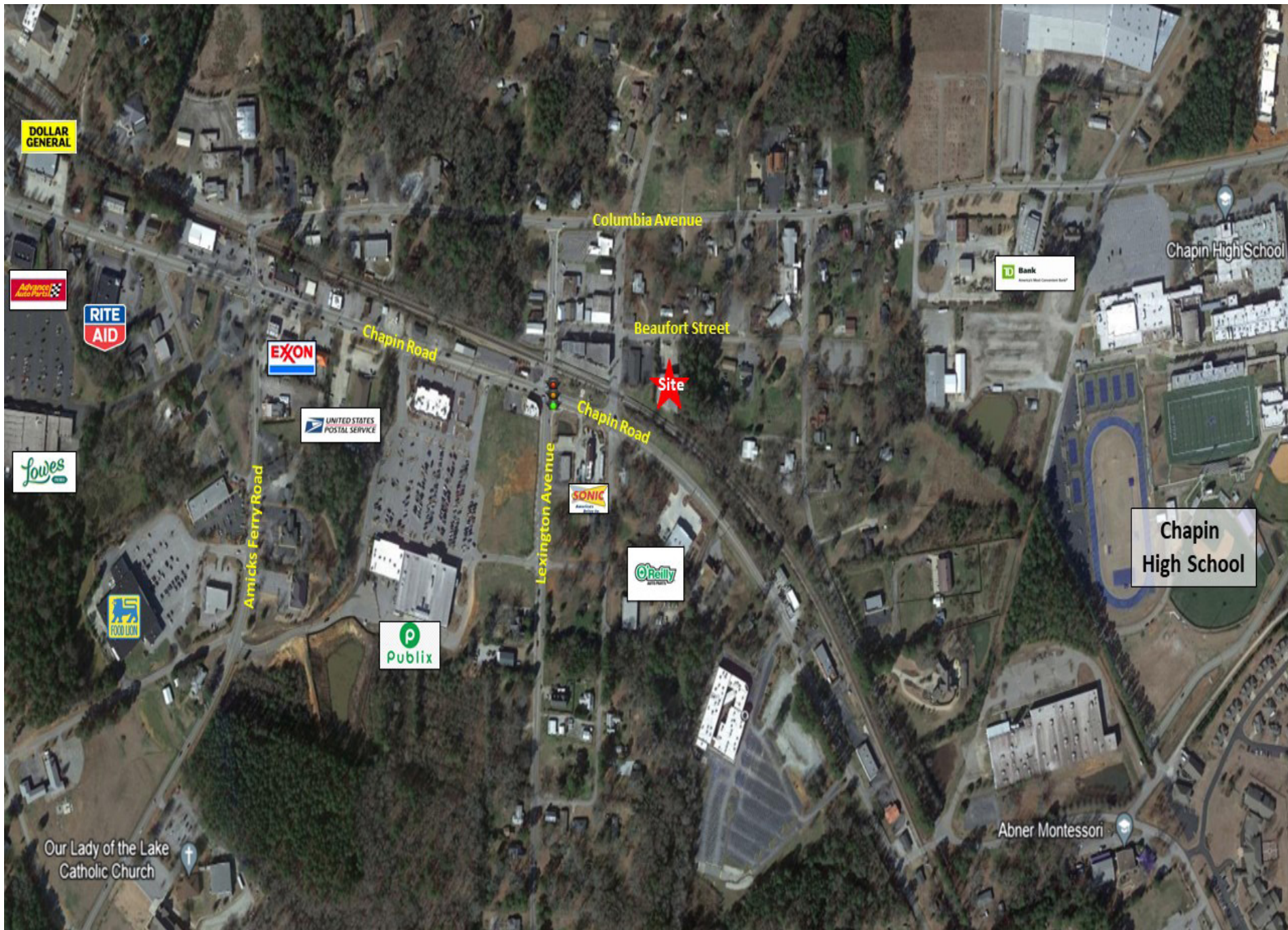
2.7 miles to  
Interstate 26



0.41 AC

DEMOGRAPHICS	1 MILE	3 MILES	5 MILES
2023 Population	1,849	9,086	22,660
Med HH Income	\$67,011	\$69,323	\$86,102
Avg HH Income	\$95,476	\$95,811	\$116,152

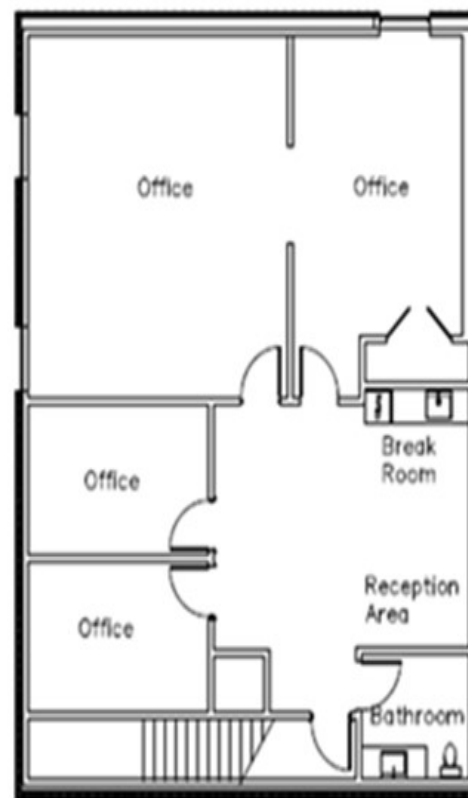








FIRST FLOOR



SECOND FLOOR

